

SITE 11

DEVELOPMENT OF TOURISM RELATED FACILITIES
FOR SITE ALONG NH 52 (VIJAYAPURA - SOLAPUR
ROAD) AT VIJAYAPURA DISTRICT
UNDER THE CIRCUIT DEVELOPMENT FOR SOUTHERN
KARNATAKA (HAMPI – BADAMI – AIHOLE –
PATTADAKKAL - VIJAYAPURA)

PROJECT INFORMATION MEMORANDUM



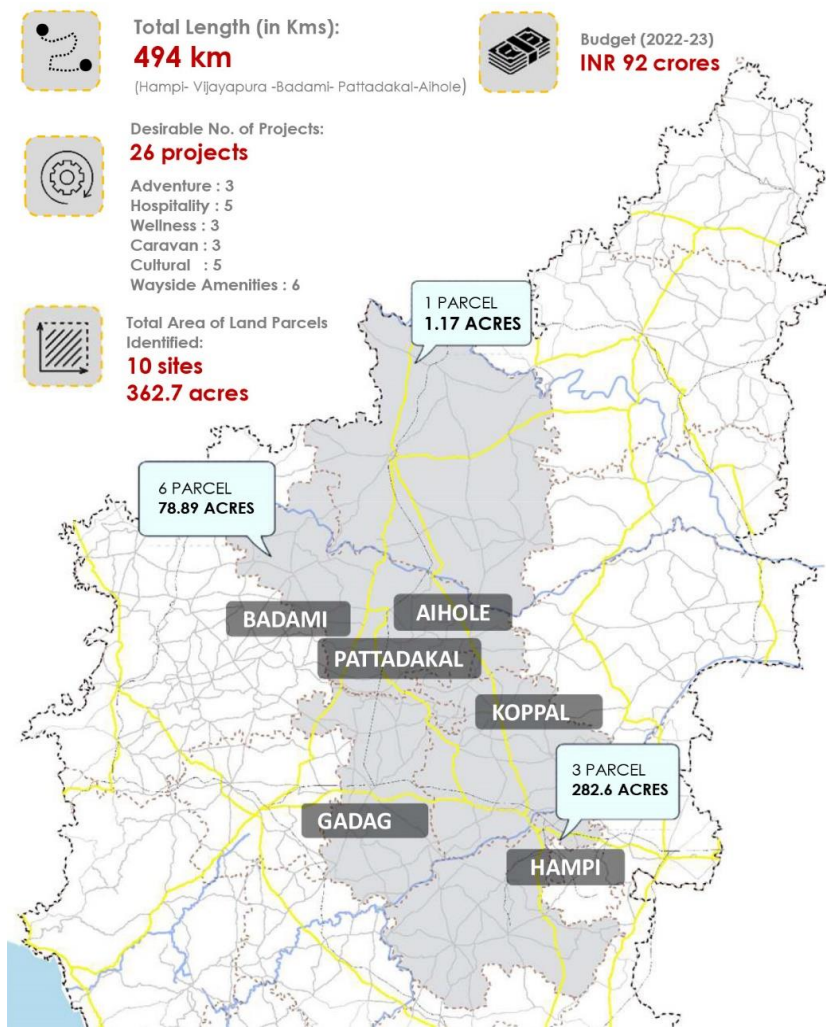
Project Information Memorandum

PROJECT BACKGROUND

Karnataka with its wide variety of tourism offerings such as beaches, hill stations, heritage monuments, national parks, wildlife sanctuaries etc. continues to be a prime tourism destination in India. Given the variety of tourism assets, the state is promoted under the tagline “One State, Many Worlds”. Department of Tourism, Government of Karnataka (the “DoT” or the “Client”) established in 1974, is vested with the responsibility to develop and promote Karnataka Tourism.

DoT intends to develop Tourist Infrastructure across sites in Circuit in Northern Karnataka (Hampi – Badami – Aihole – Pattadakal - Vijayapura) on PPP mode. The Karnataka State Budget 2022-23 has proposed for the development of Hampi – Badami – Aihole – Pattadakal – Vijayapura tourist circuit (North Circuit) and Mysuru – Srirangapatna – Hassan – Belur – Halebidu tourism circuit (South Circuit) to be developed under the PPP model to promote tourism. Development of the circuit is expected to converge with the support offered for tourism projects under the Karnataka Tourism Policy 2020-26.

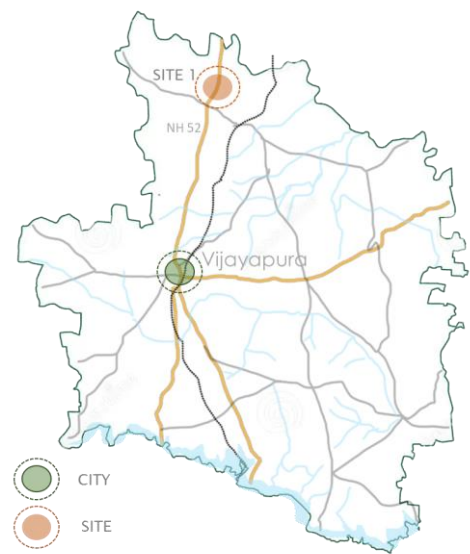
ABOUT NORTHERN TOURISM CIRCUIT



Project Information Memorandum

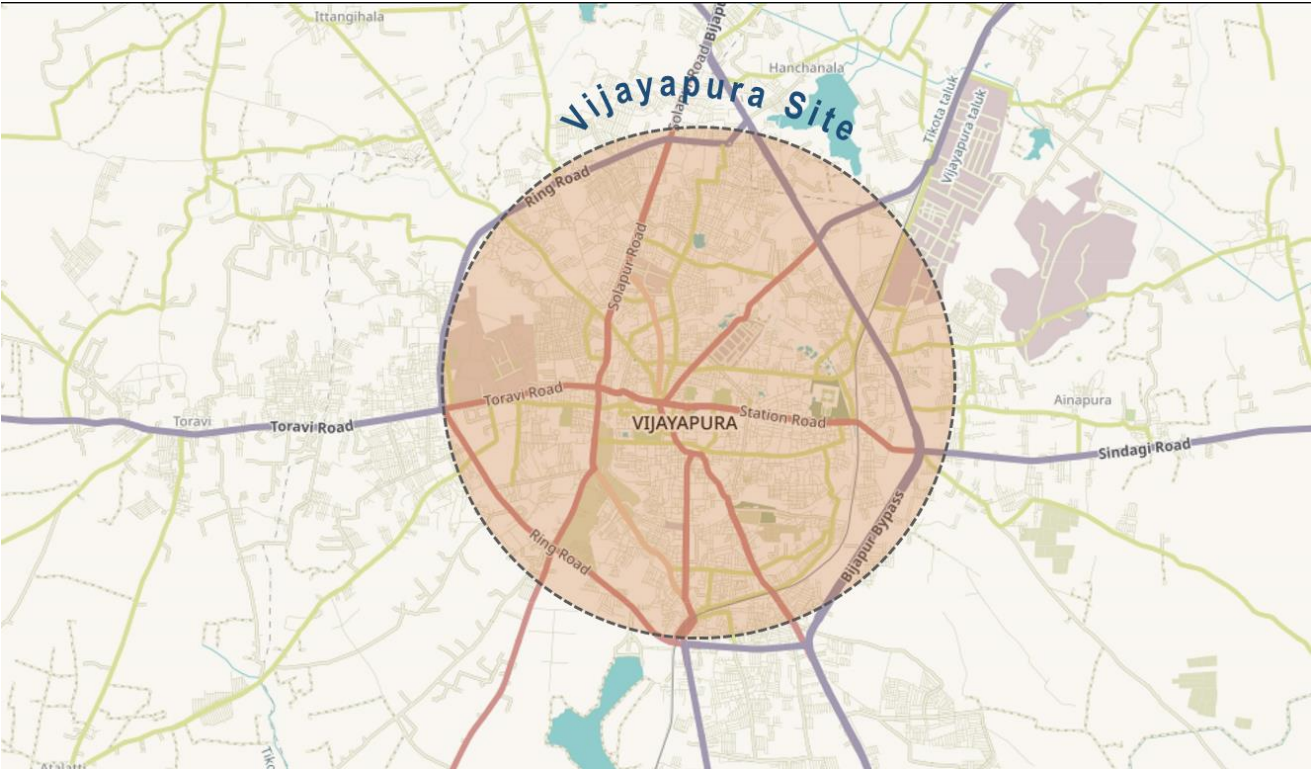
PROJECT SITE

The Land, located in close proximity to Vijayapura City and adjacent to NH52, boasts easy accessibility by road. With significant frontage along NH-52, the site is strategically positioned for the proposed development of way side amenities. Given that a considerable number of tourists traveling to Vijayapura utilize NH 52, the envisioned amenities will effectively serve the passing traffic along this route.



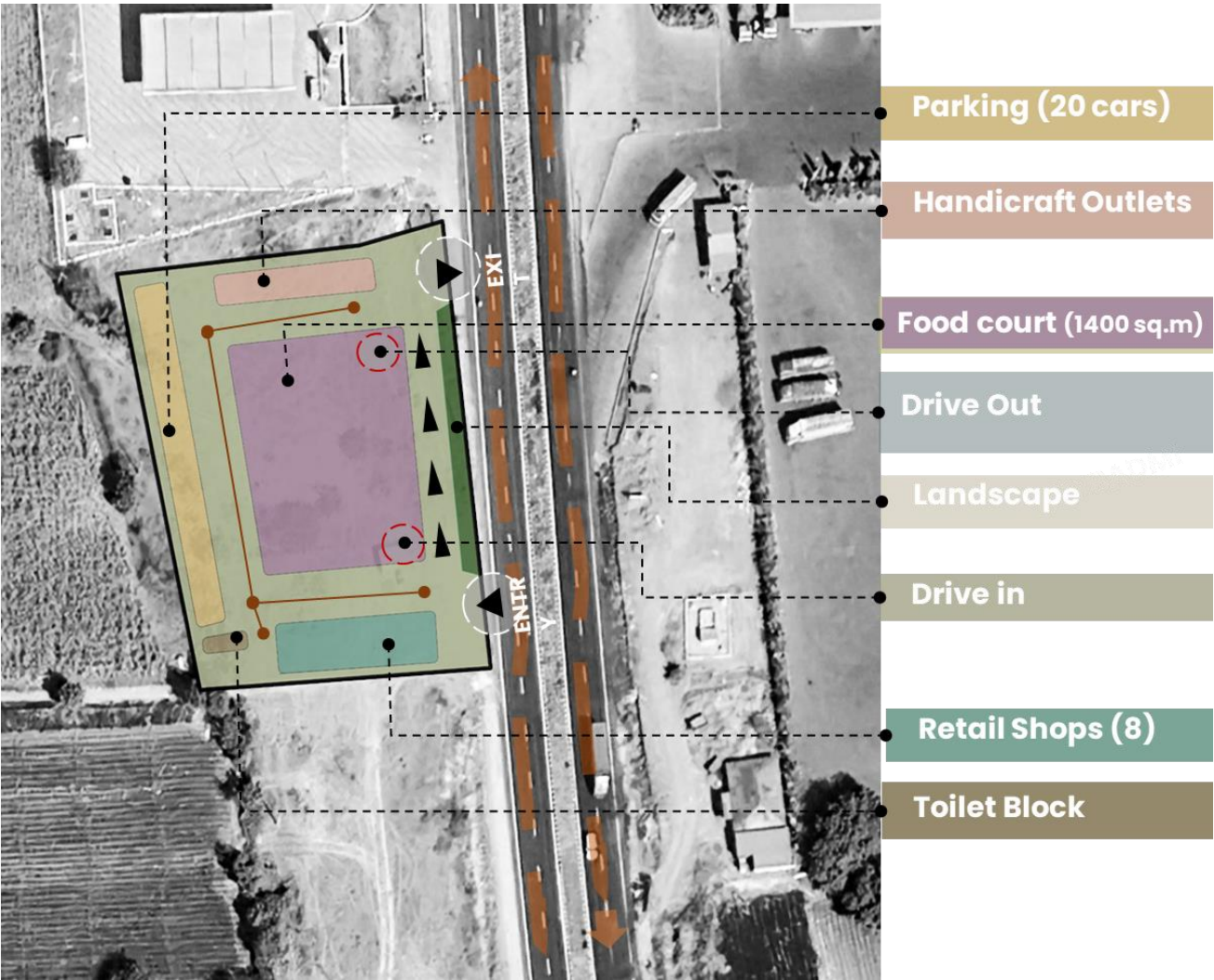
SITE	DETAILS
SITE AREA	1.17 Acres
LOCATION	Opp IOC petrol Bunk, Balloli Village, NH 52
LAND OWNERSHIP	Department of Tourism, GoK

LOCATION AND CONNECTIVITY



Project Information Memorandum

CONCEPT MASTERPLAN



SITE POTENTIAL

Site Details	Adventure	Hospitality	Wellness	Caravan	Cultural	Way Side Amenities
Site near Banashankari temple					✓	✓

Project Information Memorandum

PROJECT COST

The total project landed cost is tentatively **Rs 5.84 Cr**

PROPOSED COMPONENTS

The components for the site are Wayside Amenity at the proposed site are:

- Food Courts and Restaurant
- Parking
- Restrooms and Amenities
- Retail Shops
- Public Convenience

